



PRESSALIT®



Meeting bariatric needs

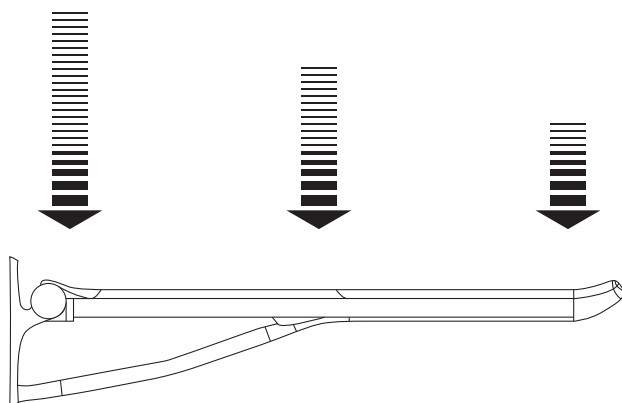
Test methods and loads



Test methods

At Pressalit we test our products so we can be completely sure that they can withstand even extreme real-life conditions. We push the products to the very limit to identify any weaknesses by subjecting them to rigorous tests. The products are tested according to the requirements in the international standard for assistive products for personal hygiene ISO 17966:2016, and in addition to these, Pressalit has developed a number of tests which we believe are relevant to the individual types of equipment.

For example, the illustration below shows our test method for a support arm. The load which the product can withstand increases as we get closer to the wall.



All tests have been conducted by mounting the products on a solid wall, which is what Pressalit recommends. The lifespan of the product is not affected in any way by the wall type. However, the overall solution will inevitably be influenced by the condition and material of the wall, so reinforcement should always be used if the wall is not stable.



Static test

We also conduct a static test on our products, and we therefore know exactly how many pounds each product can carry for 1 minute. The test is also carried out on the weakest part of each product.



Safety factor

According to the International standard "Assistive products for personal hygiene" (ISO 17966) the manufacturer must declare the maximum load of a product. However, the product has been tested with an even greater load, because a 1.5 safety factor always applies.

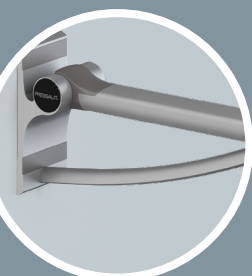
Maximum load x safety factor = test load

This catalogue shows the test loads.



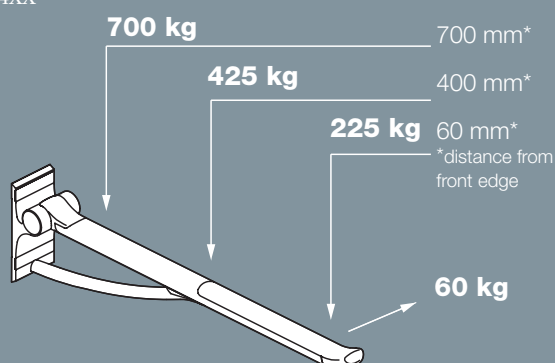
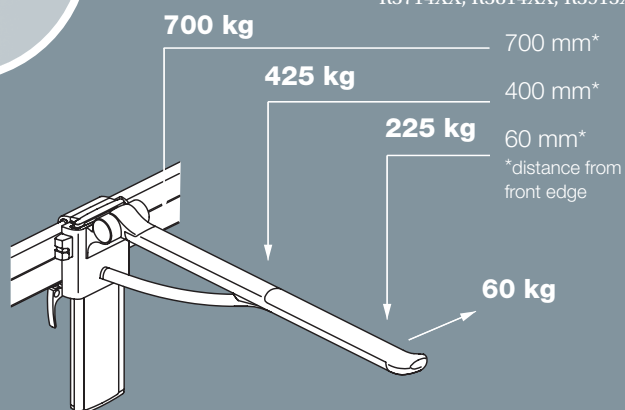
Lateral test

In addition to the above testing methods, we subject our support arms and armrests to a lateral test to ensure that they can withstand e.g. transfer from a wheelchair. The lateral test involves pressing the product 10,000 times at a 45° angle for 2 seconds at a time.



Support arms

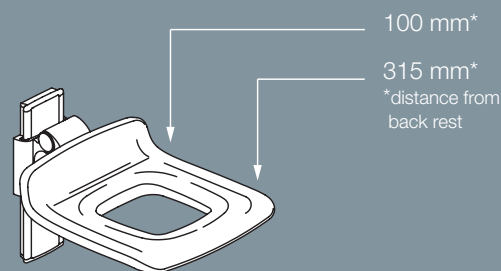
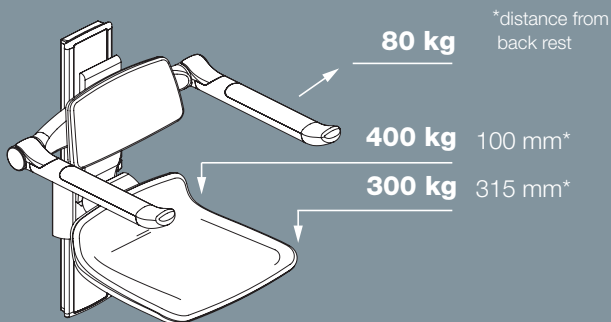
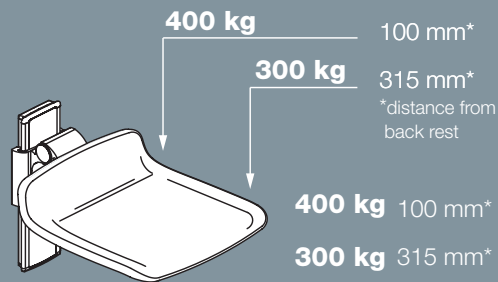
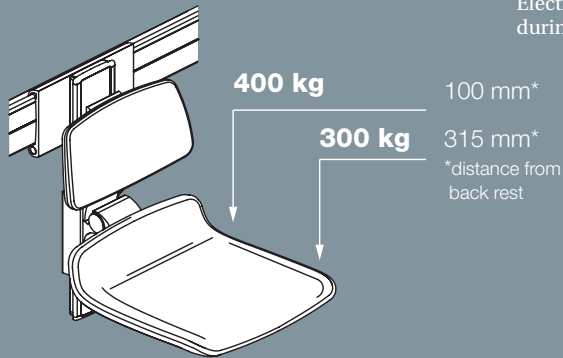
Model: R3600XX, R3703XX, R3704XX, R3713XX, R3714XX, R3814XX, R3913XX, R3914XX



Shower seats 310 + 450

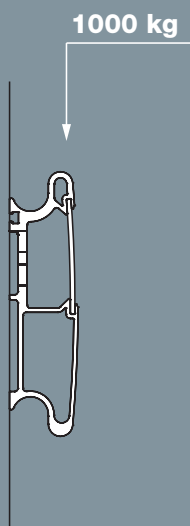
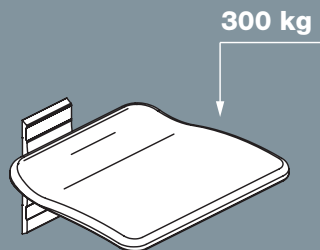
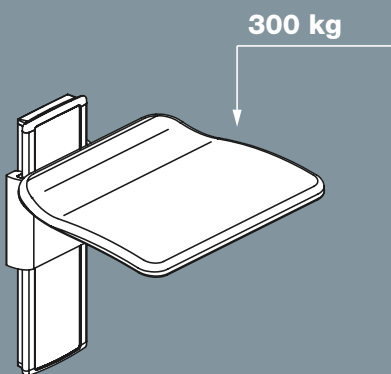
Model: R7304-R7665

Electrically operated shower seats have a maximum load of 150 kg during height adjustment.



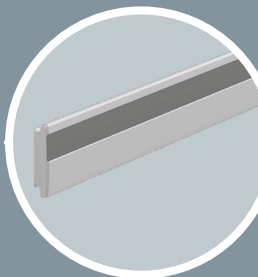
Folding seats

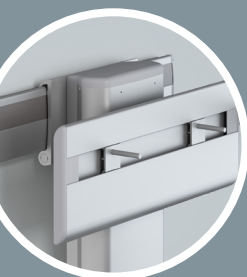
Model: R5510, R5520



Wall tracks

Model: R9806 - R9839

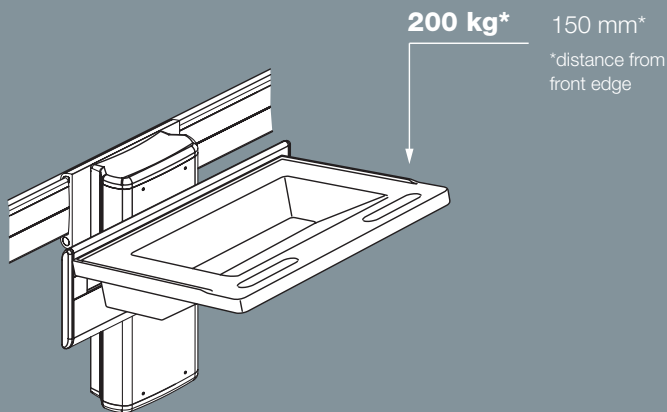




Wash basin brackets

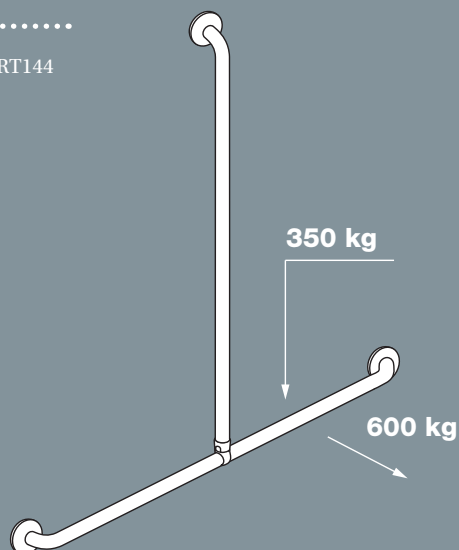
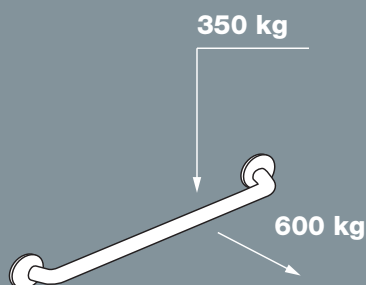
Model: R4550-R4781

Electrically operated wash basin brackets have a maximum load of 100 kg during height adjustment



Handrails

Model : RT100 - RT144



PRESSALIT SUPPORTS UNITED NATIONS GLOBAL GOALS



WE SUPPORT



Pressalit A/S
 Pressalitvej 1
 8680 Ry
 Danmark
 T: +45 8788 8788
 F: +45 8788 8789
pressalit@pressalit.com
pressalit.com

Pressalit Ltd
 100 Longwater Avenue
 Green Park
 Reading RG2 6GP
 United Kingdom
 T: +44 (0) 118 923 2696
 F: +44 (0) 118 986 8867
uk@pressalit.com
pressalit.com

Pressalit Pty Ltd
 T: +61 0415 425 461
au@pressalit.com
pressalit.com