



Accessibility solutions for bathrooms

Many settings require bathrooms to be equipped with fixtures to accommodate the needs of different users. This requires careful planning. Pressalit specialises in designing flexible, user-friendly, and easy to clean solutions that help create a modern and eye-pleasing accessible bathroom. Our experts are always ready to guide and advise you on solutions that will fit your settings in the best possible way.

The right choice

With people in focus

The right product solutions are paramount when it comes to the design layout of accessible bathrooms that can accommodate the needs of both individual users and caregivers – while also solving many of the everyday challenges that arise in bathrooms. This applies regardless of the bathroom being in a hospital, a care facility, a private home, public spaces, or in a hotel. The right product solutions help make users more self-sufficient, which not only improves their quality of life, but also benefit caregivers.

At Pressalit, we are the leaders in creating accessible spaces for people. We achieve this through the development of accessible and flexible bathroom solutions that help create better lives for people with functional disabilities and their families, a better working environment for caregivers, and a better, long-term solution for the organization making the investment.

We combine safety, ergonomics, hygiene, and aesthetics – while keeping the user in focus at all times.



Contents

Creating accessible bathrooms.....	4
Different solutions for different needs.....	5
Hospitals.....	6-7
Care facilities.....	8-9
Private residences.....	10-11
Public restrooms.....	12-13
Hotels.....	14-15
The PLUS system.....	16-17
Solutions for every need.....	18
Thoughtful solutions.....	19
PRODUCT OVERVIEW	
Wall tracks and sink brackets.....	20
Sinks.....	21
Toilet fold down grab bars.....	22
Toilet lifters and toilets.....	23
Toilet seats.....	24
Shower seats and back rests.....	25
Shower grab bars.....	26
Accessories.....	27
Foldable seats.....	27

Creating accessible bathrooms

The accessible bathroom must be able to accommodate a range of needs specific to individual users, caregivers, and building owners.

For the user reliant on assistive aids, it is important to be able to be self-sufficient in the bathroom to the greatest extent possible. This improves quality of life and happiness.

For caregivers, for whom the bathroom is part of their workplace, it is important that the solutions contribute to a safe and appropriate working environment without heavy lifting or rotation.

For the building owner making the investment in the product solutions, it is important for these to be future-proof, durable, and easy to maintain.

Creating solutions that work for the one while also adjusting to the many requires extensive knowledge of different patterns of movement as well as layout and spatial requirements. Through detailed collaboration with users and caregivers, we ensure that our solutions can be adjusted and adapted to the person, and not the other way around.



Self-sufficiency for users:

The right product solutions contribute to greater dignity and a higher quality of life.



Good working environment for caregivers:

The right product solutions reduce injuries and make work more respectful towards the user.



Sound investment for the owner:

The right product solutions can reduce the number of sick days and costs for maintenance and repair.



Different solutions For different needs

People are different and have different needs when in the bathroom. Focusing on the target group is crucial when planning the layout of a bathroom. Our layout

guide provides information and advice on spatial requirements at the three stations in the bathroom: the sink, the toilet, and the shower.



A truly accessible bathroom accommodates the needs of any user, regardless of their physical ability. Horizontally and vertically adjustable solutions provide the highest degree of accessibility. Our flexible wall track system, PLUS, makes it possible to adjust these solutions both in height and laterally, creating optimal conditions for all users.

The need for this type of bathroom is especially prominent in care facilities and senior living facilities, rehabilitation centers, and hospitals. This solution is also ideal for hotels.



If the user group is more homogeneous and self-sufficient, although comprised of both sitting and standing users, height adjustable solutions will in many cases satisfy user needs.

The need for height adjustable solutions is particularly prominent in private homes, institutions, locked door public restrooms, and hospitals.



In a bathroom most frequently used by the same users with a stable condition, fixed mounted solutions will be appropriate.

The need for fixed mounted product solutions will particularly be prevalent in private homes or in open-access public restrooms.

**FIND INSPIRATION AND ADVICE ON
BATHROOM LAYOUT ONLINE**

Need advice?
Call us today or
request a quote



Hospitals

Hygiene and safety are top priorities in a hospital setting. The bathroom must be able to accommodate the patient's need for self-sufficiency and safety with solutions that will, among other things, minimize uncertainty and prevent falls. At the same time, it must function as a workplace for staff.

This means creating space for various working situations around the sink, the toilet, and in the shower with flexible solutions that allow for a minimization of hazardous working positions and lifting. All of this must be fulfilled without compromising hygiene. The product solution should be easy to clean and be able to tolerate the powerful cleaning agents used in hospitals.

READ MORE ONLINE ABOUT HOW WE TEST THE QUALITY AND SAFETY OF OUR PRODUCTS



1

AROUND THE SINK

Hospital bathrooms are used by both seated and standing users. In order to be able to accommodate the needs of both user groups, the sink should be height adjustable at minimum. It should also be positioned with ample space on both sides to provide staff optimal working conditions in cases where they need to assist.

Safety and hygiene go hand in hand

A sink with integrated hand grips makes it easier for the patient to be self-sufficient in the bathroom,

which frees up working time for staff. The robust integrated hand grips will also help prevent falls.

Our MATRIX series includes several sinks ideal for hospitals. For example, the height adjustable MATRIX MEDIUM, developed with contoured lines and concealed pipes for easy and efficient cleaning.

[EXPLORE OUR PRODUCT RANGE ONLINE](#)

[REQUEST A QUOTE](#)

2

AROUND THE TOILET

As for the toilets, it is necessary to focus on hygiene, safety and flexibility. A height adjustable toilet makes cleaning easy, increases ease of use, and

facilitates easy transfer from and to a wheelchair. Having enough space on each side of the toilet is crucial for a caregiver when assisting the user.

[EXPLORE OUR PRODUCT RANGE ONLINE](#)

[REQUEST A QUOTE](#)

3

IN THE SHOWER

Personal hygiene is important for the well-being of the patients, which makes the shower area an essential part of a bathroom. While some need assistance when taking a shower, others can manage to do it themselves by relying on assisting aids. Regardless, the accessible bathroom has to accommodate every need.

Save time and space with the right solutions

Pressalit offers a wide range of shower seats and accessories. For example, a foldable shower seat is a great and flexible option when it comes to freeing

up space for standing users and ensuring maximum safety for those who rely on that. Together with sturdy grab bars, it helps to maintain safety and increases independence when in the shower. The right solution also eases the work of the caregivers and help prevent falls. It releases time for helping those who depend on help, contributes to a quicker recovery of the patients and increases sense of dignity.

[EXPLORE OUR PRODUCT RANGE ONLINE](#)

[REQUEST A QUOTE](#)

” *Secure delivery throughout the entire project, good feedback and support, and products with lasting quality are the reasons we have chosen Pressalit.*

*Henning Jørgensen, CEO, Badelement,
Danish turnkey contractor for bathroom cabinets for hospitals.*



Care facilities

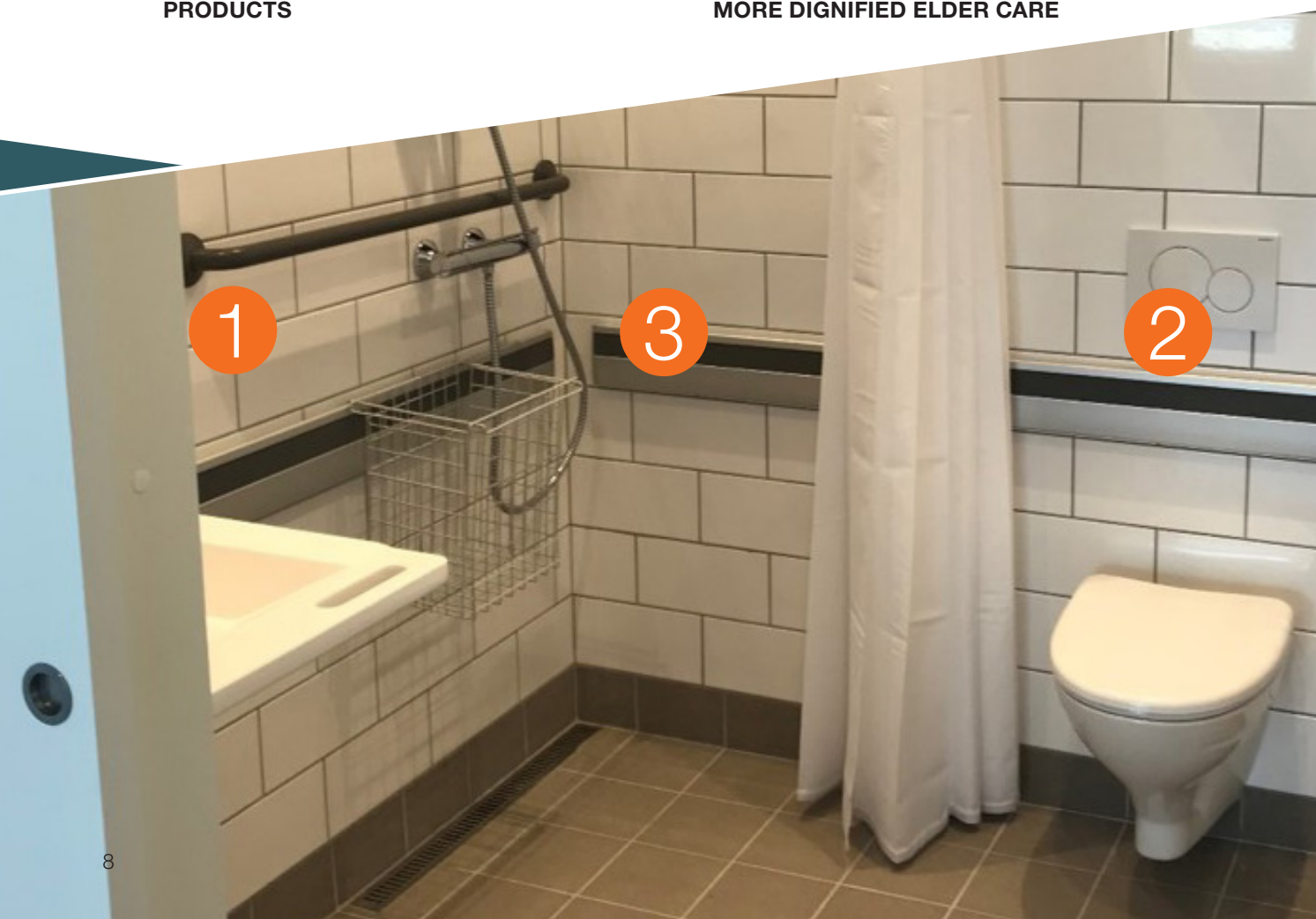
In residential care facilities it is important to account for the resident's need for safety and security and the staff's working environment; the facility is both a home to the residents and a workplace for healthcare professionals.

Flexible solutions with adjustable aids are ideal to accommodate different and sometimes changing

needs that can require frequent adjustment of the layout. The costs associated with this can be reduced by choosing our flexible and unique wall track system. This system makes it possible to shift accessibility solutions between residents or to purchase various solutions to incorporate as the needs change.

READ MORE ONLINE ABOUT HOW WE TEST THE QUALITY AND SAFETY OF OUR PRODUCTS

READ MORE ONLINE ABOUT HOW THE RIGHT SOLUTIONS CONTRIBUTE TO A MORE DIGNIFIED ELDER CARE



1

AROUND THE SINK

Residents in care facilities usually have different needs, and these needs can evolve over time. It is therefore a good idea to select solutions and assistive aids that are adaptable. Flexible solutions at the sink include, among other things, sinks with adjustment options.

Integrated hand grips provide safety and security

An ergonomic sink with integrated hand grips can contribute to the resident's safety in the bathroom

and minimize risk of falls. The grips can also serve as a tool in the daily training routine. The grips on our sinks are stable and ergonomic, ensuring a solid grasp even when the sink is wet. This provides good security for the resident and can contribute to an increased level of self-sufficiency.

[EXPLORE OUR PRODUCT RANGE ONLINE](#)

[REQUEST A QUOTE](#)

2

AROUND THE TOILET

Optimal layout of the area around the toilet is important for both residents and caregivers. Enough space around the toilet must be available to allow for transfer from wheelchair to the toilet, and appropriate assistive aids should be close at hand. For example, it is important that the toilet grab bars are stable and sturdy, have the appropriate length, and offer a firm grip. These features will ensure a secure transfer and provide support and comfort when at the toilet. Furthermore, the ability to adjust the grab bars vertically and horizontally accommodates any individual resident.

Supporting spatial orientation by use of color

Color is an essential consideration when it comes to the layout of the bathroom in residential care facilities. Colors can contribute to a more homely expression and a safer and more secure environment for residents with dementia. For example, it is of great advantage to select a toilet seat and toilet grab bars that contrast with surrounding surfaces, as this makes it easier for residents to orientate themselves. Our product solutions are available in a range of colors that suit any bathroom.

[EXPLORE OUR PRODUCT RANGE ONLINE](#)

[REQUEST A QUOTE](#)

3

IN THE SHOWER

The shower is one of the places where it is of the utmost importance to focus on safety and minimize the risk of falls. One means of achieving this is to install solid and ergonomic shower grab bars that provide a firm grip - even when wet.

The shower seat must be comfortable to sit on and easy and safe for the staff to work around. A non-slip and adjustable shower seat is both safe to sit on and can be adjusted to the individual resident and care situation. This makes the entire bathing experience easier for both residents and staff.

Future-proofing of the bathroom with flexible solutions

In the shower, like in the rest of the bathroom, it is advisable to select flexible solutions that can be adapted to the individual. This ensures safety and security for both residents and staff, while also minimizing costs associated with progressive conditions and resident turnover. By the use of wall tracks, our flexible PLUS system makes it possible to mount and replace products without any tools or repair of walls. This solution is a great leap towards future-proofing of the bathroom.

[EXPLORE OUR PRODUCT RANGE ONLINE](#)

[REQUEST A QUOTE](#)

” We went with Pressalit solutions when furnishing our bathrooms because of the safety they provide both residents and employees. That has been our top priority throughout.

Anne Juelkert, Director, Johannes Hages Hus, Danish social psychiatric facility



Private residences

It is important to feel comfortable and at home where one lives - including in the bathroom. This means it is essential for bathrooms in private housing to be laid out based on the needs and wishes of the user.

This applies to a family bathroom as well as a bathroom used by one person only. Assistive aids must be able to meet the needs that arise and contribute to safety and self-sufficiency so they can be an asset to the entire family.

READ MORE ONLINE ABOUT HOW LAURA FURNISHED HER DREAM BATHROOM

REQUEST A QUOTE



1

AROUND THE SINK

If the sink is used by the entire family, and if the family includes both standing and sitting users, a height adjustable sink is a sensible choice. The height adjustable sink can easily be adjusted to the individual user. With plenty of space under the sink, seated users can get very close to it and reach the faucet, while standing users can wash their hands at a comfortable height.

Select your sink carefully for the best solution

Some users need additional support at the sink. If this is the case, a sink with hand grips would be the best choice. The hand grips on our sinks are designed with a focus on safety and self-sufficiency, making it

easier for users to operate the sink themselves. The grab bars can also be used as part of a daily training, e.g. for ADL functions.

If there is no need for adjustability of the sink, neither vertically nor horizontally, a fixed mounted sink would be a good choice. A well designed ergonomic sink helps stabilize the user and thereby reduces risk of falls.

[EXPLORE OUR PRODUCT RANGE ONLINE](#)

[REQUEST A QUOTE](#)

2

AROUND THE TOILET

Toilet grab bars are typically an indispensable aid at the toilet. In private bathrooms it should be a priority for toilet grab bars to be able to fold up if they are disruptive to other family members or guests, who have no need for them. For the user, who needs the toilet grab bars, correct placement and length should also be a priority.

How to choose the appropriate grab bars for different users

It is important for people to be as self-sufficient as possible; this contributes to both increased quality of life and dignity. Around the toilet, it is important for toilet grab bars to be non-slip and sturdy, so that the users feel secure using them on their own, as this

alone can contribute to a greater degree of self-sufficiency in the bathroom.

If the users' condition is stable, they will benefit from a fixed mounted toilet grab bar, appropriate for the user. If, on the other hand, the user's condition is progressive, height adjustable toilet grab bars are the optimal choice. This also applies if the toilet grab bars are used when transferring to and from the toilet as well as support when using the toilet, and where the ideal height for these two operations is different.

[EXPLORE OUR PRODUCT RANGE ONLINE](#)

[REQUEST A QUOTE](#)

3

IN THE SHOWER

If the user's condition is stable and the need for product solutions are therefore not significantly subject to change, a fixed mounted shower seat is sufficient. Naturally, this must be placed at the appropriate height and at the right distance to shower grab bars. The shower seat should fold up so that it is not in the way for any other family members, who may also be using the bathroom.

Independent personal care provides quality of life

Being able to participate in, or independently manage, one's personal care is important. The solutions around the shower should therefore also

encourage this. Choosing secure shower grab bars that can be used as support aid as well, increases safety while showering and the user experiences a greater sense of security. This makes it easier for users to be able to take a bath and manage their personal care on their own.

The colors of the product solutions in the shower and around the toilet and the sink can be selected to match the rest of the layout. This helps make the bathroom a room for the entire family, one that is welcoming and comfortable for everyone.

[EXPLORE OUR PRODUCT RANGE ONLINE](#)

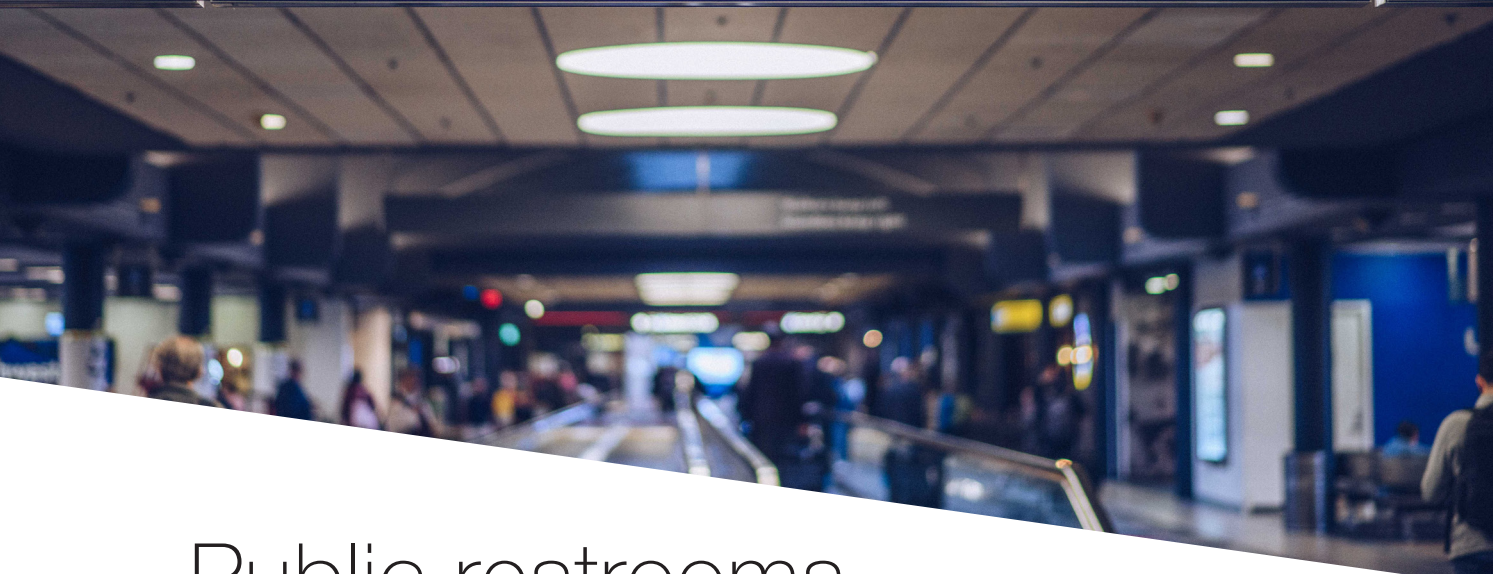
[REQUEST A QUOTE](#)

” *The first week I cried from happiness over no longer having back pain.*

Helen, Laura's mother



Gates 5, 7-25



Public restrooms

Having the right product solutions in public restrooms is paramount. If visitors have access to an accessible toilet with the appropriate aids, they will be more likely to come more often.

Insufficient accessibility is one of the main reasons why many visitors with functional impairments avoid visiting public spaces and venues, which

has a great impact on quality of life for them and their families. The absence of appropriate solutions means that people with disabilities may have to be changed on a dirty floor or in the trunk of a car, or, in worst cases, refrain from consuming fluids in order to avoid toilet visits.

READ MORE ONLINE ABOUT HOW WE TEST THE QUALITY AND SAFETY OF OUR PRODUCTS

READ MORE ONLINE ABOUT SHOWER AND CHANGING TABLES

REQUEST A QUOTE



1

2

3

1

AROUND THE SINK

When a sink is to be used by people with different needs, being able to adjust the height to suit a given situation is crucial. Pressalit offers a range of eye-pleasing and functional sinks ideal for locked door public restrooms. Thoughtful design and distinct visual expression bring an aesthetic touch to the restroom without compromising functionality, safety, or hygiene.

The difference lies in the detail

Whether choosing a fixed height or adjustable sink, the details around the sink are important to consider. First and foremost, it is necessary to consider the

location of the sink in the room. If the size of the room allows, we recommend placing the sink so that there is sufficient space for a helper on each side.

The mirror is another detail that should be taken into consideration. To meet the needs of both sitting and standing users, it should have the right size and be placed at the right height.

[EXPLORE OUR PRODUCT RANGE ONLINE](#)

[REQUEST A QUOTE](#)

2

AROUND THE TOILET

Many people have difficulty with getting to the toilet itself, as it can be a challenge to get on and off the toilet without assistive aids. Toilet grab bars with an ergonomic design ensure a good grip when standing, sitting or getting up from the toilet. Our toilet grab bars are available in many variations ranging from fixed height to fully flexible solutions that can be adapted to suit individual needs.

A toilet lifter increases accessibility and self-sufficiency

The ability to adjust the height of the toilet allows the user to get on and off the toilet more easily, ensuring both a safe and comfortable toilet visit. Furthermore,

it improves the working conditions for helpers and caregivers.

Layout should facilitate fast and effective toilet cleaning to maintain optimum hygiene. This can be achieved by choosing solutions made from durable materials that can easily be wiped down with a cloth. The design of the product solutions is also important; assistive aids with rounded edges help prevent accumulation of dirt and grime. This results in better hygiene and easier cleaning.

[EXPLORE OUR PRODUCT RANGE ONLINE](#)

[REQUEST A QUOTE](#)

3

AROUND THE CHANGING AREA

If shower opportunities are available in the restroom, it is important to provide the right product solutions including ergonomic and secure grab bars and a foldable shower seat. If no bathing options are available in the room, but a space for changing is present, other product solutions should be included.

Outfit the room with a changing area to maintain the dignity of visitors

Public places often lack the possibility to change clothes, leaving visitors with disabilities with a sense of powerlessness and indignity, as changing must

often take place on the floor or backseat of a car. An available shower and changing table that is carefully designed to provide users and caregivers with the most optimal changing experience solves these challenges and accommodates all the preconditions for a dignified visit to the toilet. A shower and changing table provides a stable base for changing and care procedures for both children and adults, making this a fully flexible and accessible solution.

[EXPLORE OUR PRODUCT RANGE ONLINE](#)

[REQUEST A QUOTE](#)

” *Facing a lack of accessible bathrooms, many people avoid going out. It is not because we do not exist, it is because we are not included.*

Dr. Josie Badger, diagnosed with congenital myasthenic syndrome



Hotels

Individuals with reduced functional capacity constitute a large potential customer group for hotels; a customer group whose potential is not fully recognized in many places. This makes installing accessibility product solutions in hotel bathrooms a prudent business decision and a progressive ethical consideration at the same time.

Many families avoid enjoying holidays or travel where overnight hotel stays would be involved if the right assistive aids are not available. Having the right accessibility solutions in hotels can therefore help create a better life with positive experiences for families affected by impaired capacity in one way or another.

READ MORE ONLINE ABOUT HOW WE TEST THE QUALITY AND SAFETY OF OUR PRODUCTS

REQUEST A QUOTE



1

AROUND THE SINK

An ergonomic sink meets the needs of the seated guest without compromising the design and aesthetics of the room. In fact, the ergonomic design can contribute to a unique bathroom styling with a luxurious and elegant expression. Our ergonomic sinks are practical, easy to clean, and aesthetically pleasing.

The size of the sink is important

In a hotel bathroom, the sink often serves as a storage area, where guests keep their toiletries. It requires a spacious and flat surface around the sink – same features that would ensure support and safety

to a seated guest. Therefore, choosing a sink that is large enough to accommodate both needs, is essential.

An ergonomic sink with a concave front is a good way of accommodating the needs of the seated guest without compromising the design or aesthetics of the space. Additionally, an ergonomic sink with a concave front will add more comfort and accessibility to a seated guest, without compromising space or visual expression of the bathroom.

EXPLORE OUR PRODUCT RANGE ONLINE

REQUEST A QUOTE

2

AROUND THE TOILET

For hotels, bathroom hygiene is one of the absolute top priorities - the bathroom must always be clean for the next guest. A wall-hung toilet, that allows easy and efficient cleaning, is therefore an ideal solution when furnishing a hotel bathroom. With its modern look, it also adds to the contemporary expression of the hotel bathroom.

Mount and remove assistive aids as needed

Toilet grab bars should be placed on each side of the toilet in order to ensure an easy and secure transfer for the seated guest. At the same time, they should be an aid to the standing guest who only requires

some support. Choosing toilet grab bars that can quickly and easily be mounted and removed without tools, makes it possible to adapt the bathroom to the individual guest.

Therefore, guests who do not need any assistive aids will experience a standard bathroom. Guests, who depend on assistive aids, will find a fully equipped bathroom and will therefore feel recognized and accommodated from the moment they step into the bathroom.

EXPLORE OUR PRODUCT RANGE ONLINE

REQUEST A QUOTE

3

IN THE SHOWER

The risk of falls in a wet and slippery shower area or in a bathtub can be reduced by choosing handrails that are ergonomic and that do not become slippery even when wet. The solid grip these offer the guest will also make the entire bath experience more secure and comfortable.

Make accessibility a part of good service

Why not make accessibility a part of the service every hotel offers to its guests and thus attract more customers? Accessibility is not a privilege or an

exception. The time has come to make accessibility and inclusion a natural choice.

A shower seat can, like toilet grab bars and an ergonomic sink, be a great and indispensable help for some guests, while for others these features may be superfluous. It is therefore a great advantage to be able to mount or remove product solutions, including the shower seat, using the PLUS wall track system, which is simple and practical in its design.

EXPLORE OUR PRODUCT RANGE ONLINE

REQUEST A QUOTE

” *The challenge in making the bathroom work for numerous guests and their various wishes and needs can be met with our PLUS wall track system, where aesthetics and functionality go hand in hand.*



The PLUS system

A flexible and secure solution

The PLUS system from Pressalit unites a safe and secure working environment for the caregiver and increased quality of life for the user. A good working environment for healthcare staff and caregivers includes, among other things, safe and ergonomically correct working positions, where unnecessary lifting and rotation of the body are avoided. It is therefore important to furnish the bathroom so that it can be adapted to the current care situation.

The bathroom must also be adaptable to the individual user to make the user as self-sufficient as possible. Being able to participate in their own personal care is important for most people, and a greater degree of self-sufficiency contributes directly to increased quality of life and improved self-esteem.

Choose the flexible wall track system

“The bathroom must be adapted to the user – not the other way round.” Based on this motto, the Pressalit PLUS series was developed. The entire system is built around the horizontal wall track,

which can be seen as the system’s backbone. Different product solutions in the system can be mounted onto the wall track as needed, allowing for both horizontal and vertical adjustment options. The solution is so flexible that it can be adapted to any bathroom and any user situation.

Adjustment options around the sink, the toilet, and in the shower allow for optimal working conditions for caregivers, who can push the solutions to the side for greater space or adjust the height of a solution.

Not only can the products on the wall track be adjusted both vertically and horizontally, they can also be removed and moved around as needed. That way, the products can be moved if they are in the way during caregiving procedures and can be mounted back on again when needed in a different user situation - completely without the use of tools. The wall track system was developed with a focus on user safety and ease of use. Secure grips and safety mechanisms allow the user to feel safe at all times.

Freedom - in architecture and in economics

Pressalit's PLUS system is a solution that provides freedom - both in architecture and economics. For healthcare professionals the system's ergonomic grip, horizontal and vertical adjustment options, intuitive operation, and thoughtful design are synonymous with a better working environment.

This makes the PLUS a sound investment in the workplace where the product solutions will fit the individual user as well as the individual employee.

Particularly in properties under construction, care facilities, and residential care facilities, it is a major economic advantage that the assistive aids can be mounted on the wall track and added to the bathroom, when the need arises. Furthermore, thanks to their quality, these products have a long service life, eliminating the need for frequent replacement.

All in all, this makes the PLUS system a sustainable and economic means of accommodating people's basic wish to have their individual needs accommodated.

FIND INSPIRATION AND ADVICE FOR BATHROOM LAYOUT ONLINE

REQUEST A QUOTE





Solutions for every need

Different needs call for different solutions

We have therefore developed our series of solutions to solve a range of different challenges.

Pressalit SELECT is a series of lifters for toilets and sinks. This range includes both manual and electric toilet lifters and electric sink lifters in various operating variants - and all the accessories to match. What all the lifters have in common is that they are aesthetically appealing while also easy to operate and clean.

Pressalit MATRIX is a series of sinks and sink lifters. All sinks in this range were developed with the aim of creating “the perfect sink,” where the perfect sink is the one that can be used both in

the home and in more demanding care environments, and that always provides support without compromising on safety. The perfect sink is flexible and can be adjusted in height while also easy to clean and pleasant to look at. This range includes several different sinks and lifting units that each offer unique, ergonomic, functional, and design-conscious qualities.

Pressalit VALUE is a series of various cost-effective solutions suitable for any care environment. The products in this series are an obvious choice for locations where there is no demand for frequent adjustment or where the workload is heavy. The products in this series were developed with a focus on functionality, durability, hygiene, and cost efficiency.

REQUEST A QUOTE

Thoughtful solutions

Now and in the future

All product solutions are designed and manufactured in Denmark. Throughout the entire process, we take pride in not only developing products of high quality, but also having user and caregiver in focus at all times.

We believe that quality and durability go hand in hand, and therefore we offer a five-year warranty on our products.

With the help of users

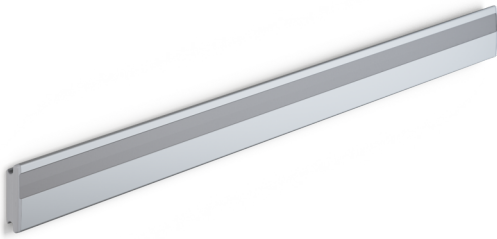
Bathroom accessibility solutions must live up to the demands and requirements that arise in practice. That is why we always incorporate healthcare staff, users, and caregivers in the development phase, when we design new product solutions. This helps to ensure that the requirements for functionality, aesthetics, hygiene, and ease of use are met. By choosing this working method, Pressalit creates the best possible product solutions that contribute to a better working environment for staff and caregivers and a higher quality of life for the users.

Danish Design
With a 5-year
warranty



Overview

Wall tracks and sink brackets

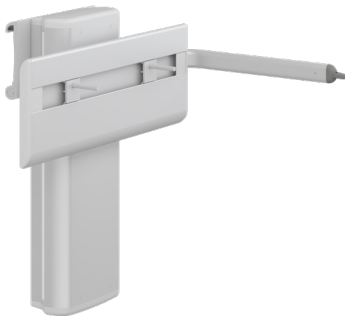


Product no. R9812112

PLUS wall track, for installation of horizontally and vertically adjustable sink brackets, fold down grab bars, shower seats and others.

Also available in a vertical version for installation of height adjustable products.

Available in various lengths.



Product no. R4780-93

PLUS powered sink bracket with lever control, height adjustable by 11.8" and horizontally adjustable on wall track.

Compatible with MATRIX SMALL and MATRIX CURVE/CURVE II sinks.

Recommended for use with flexible feed and waste system R2084/R2085/R2087.

A manual and a pneumatic assisted option is also available.



Product no. R4550112

PLUS manually adjustable sink bracket, height adjustable by 9.5". Important: Not intended for daily height adjustment.

Compatible with MATRIX SMALL and MATRIX CURVE/CURVE II sinks.

Recommended for use with flexible feed and waste system R2085/R2087.

A manual and a pneumatic assisted option is also available.



Product no. R4828000

MATRIX MEDIUM powered sink bracket, height adjustable by 7.9", with operating buttons on the front edge of the sink.

Only for use with MATRIX MEDIUM sink (R2122/R2123).

Incl. flexible feed and waste system.

A manual option is also available.

REQUEST A QUOTE

Overview

Sinks



Product no. R2053000

MATRIX CURVE II ergonomic sink, 23.6" x 19.2".
Incl. drain fitting.
Flexible feed and waste system is recommended.
Available with and without overflow.



Product no. R2021000

MATRIX SMALL sink with integrated hand grips, 22.6" x 17.7".
Incl. drain fitting.
Flexible feed and waste system is recommended.
Available with and without overflow.



Product no. R2040000

MATRIX ANGLE sink with integrated hand grips, 39.4" x 22.4",
with extra storage space for toiletries.
Right-facing. A left-facing option is also available.
Incl. drain fitting.
Flexible feed and waste system is recommended.
Available with and without overflow.



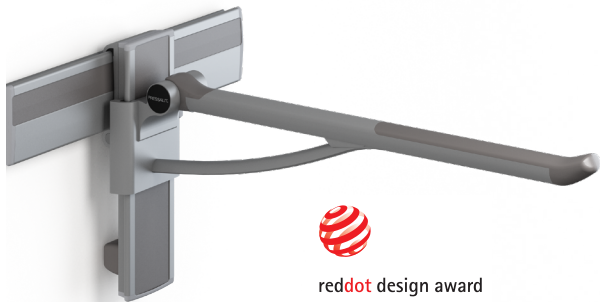
Product no. R2122000

MATRIX MEDIUM sink with integrated hand grips, 30.7" x 21.6",
with storage space for toiletries.
With operating buttons on front for height adjustment of
sink bracket.
Drain fitting ordered separately.
For installation on MATRIX powered sink bracket (R4828000).
Available with and without overflow.

REQUEST A QUOTE

Overview

Toilet fold down grab bars



Product no. R391485112

PLUS fold down grab bar 33.5", counter-balanced for mounting on horizontal wall track (not included). Projection 36.2".

Height adjustable by 9.5" and horizontally adjustable without the use of tools.

Removable and foldable. Either right or left hand operated.

Also available as 27.6" with 30.3" projection.

Available in various colors.



Product no. R370485112

PLUS fold down grab bar 33.5", counter-balanced.

Projection 34.6".

Height adjustable by 9.5".

Removable and foldable. Either right or left hand operated.

Also available as 27.6" with 28.7" projection.

Available in various colors.



Product no. R360085112

PLUS fold down grab bar 33.5", counter-balanced.

Projection 33.5".

Fixed height.

Foldable.

Also available as 27.6" with 27.6" projection.

Available in various colors.



Product no. R1111000

VALUE fold down grab bar 34".

Projection 34".

Height adjustable by 6".

Foldable.



Product no. R1109000

VALUE II fold down grab bar 33.5".

Fixed height.

Foldable.

REQUEST A QUOTE

Overview

Toilet lifters and toilets



Product no. R9143000

SELECT TL3 toilet lifter, powered.

Height adjustable by 8", with control panel on fold down grab bar.

Incl. dual-flush cistern preset at 0.8/1.6 gallons (can be changed to 0.5/1.1 gallons).

We recommend to fit with PLUS or VALUE fold down grab bars.

Either for wall or for floor outlet.

Also available in a manually height adjustable version.



Product no. R8332112

SELECT TL2 toilet lifter, powered.

Height adjustable by 15.7", with wired remote control.

Incl. dual-flush cistern preset at 0.8/1.6 gallons.

We recommend to fit with PLUS fold down grab bars.

Either for wall or for floor outlet.

Also available in a manually height adjustable version.



Product no. R2099000

Toilet, without flush rim, for mounting on wall, built-in cistern, or Pressalit toilet lifter.

Available in two lengths, 21.3" and 27.6".



Product no. R2098000

Toilet, with flush rim, for mounting on wall, built-in cistern, or Pressalit toilet lifter.

Available in two lengths, 21.3" and 27.6".



Product no. R8592318299

SCT 3000 shower change table, powered.

Height adjustable by 27.6", with wired hand control.

Foldable.

Incl. safety rail and water collection tray with integrated outlet.

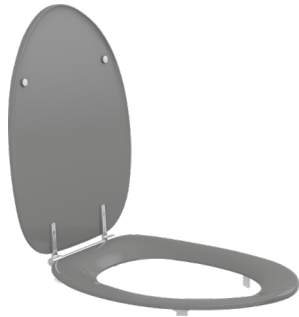
Available in two lengths, 55.5" and 75.2".

Mattresses are available in two colors.

REQUEST A QUOTE

Overview

Toilet seats



Product no. R37112-D92999

Dania toilet seat with extra strong cross bar hinge to ensure stability and stabilizing buffers for security, especially for side transfers.

Available with or without lid.

Also available with universal hinge as well as open front.



Product no. R36000-B83999

Colani toilet seat with universal hinge stabilizing buffers for security, especially for side transfers.

Available with or without lid.

Also available with extra strong cross bar hinge as well as open front. The contoured bowl shape supports and stabilizes the pelvic region and also makes this seat appropriate for children (from age 6 and up) with muscular disorders.



Product no. R43000

Dania toilet seat, 2" raised, with special hinges adapted to raised toilet seat.

Available with or without lid.

Also available with splash guard as well as open front.



Product no. R30000-D92999

Ergosit toilet seat with institutional hinge to ensure stability and support lugs for security, especially for side transfer.

Available with and without lid.

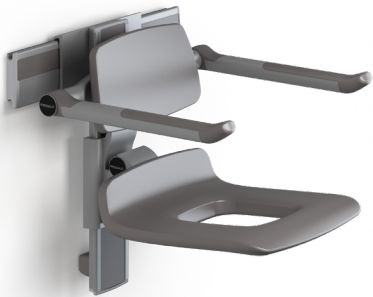
Large, wide sitting surface with good support.

Especially suitable for overweight adults with digestive problems due to the contoured surface of the seat.

REQUEST A QUOTE

Overview

Shower seats and backrests



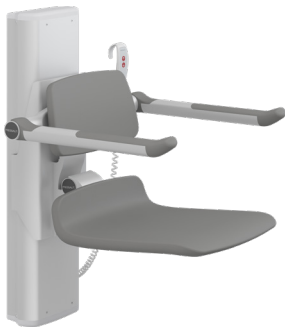
Product no. R7465112

PLUS shower seat 450 with aperture, backrest and armrests, for mounting on horizontal wall track (not included).

Manually height adjustable by 7.7" and horizontally adjustable without any use of tools.

Armrests are independently height adjustable. Seat and armrests are foldable. Also available without aperture and without armrests.

Available in two lengths, 12.2" and 17.7". Available in various colors.



Product no. R7834112

PLUS shower seat 450 with backrest and armrests, powered.

Height adjustable by 19.7 without any use of tools.

Armrests are independently height adjustable. Seat and armrests are foldable.

Also available with aperture.

Available in white and anthracite.



Product no. R7434000

PLUS shower seat 450 with backrest and armrests.

Manually height adjustable by 7.7" without any use of tools.

Armrests are independently height adjustable. Seat and armrests are foldable.

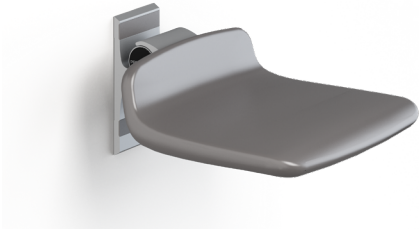
Also available with aperture, without armrests or with seat only.

Available in two lengths: 12.2" and 17.7". Available in various colors.

REQUEST A QUOTE

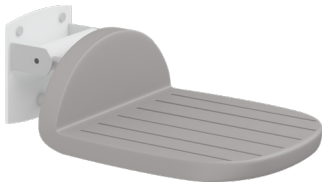
Overview

Shower seats and backrests



Product no. R7304112

PLUS shower seat 310.
Fixed height.
Foldable.
Available in two lengths, 12.2" and 17.7".
Suitable for children and young adults.



Product no. R1600000

VALUE shower seat.
Fixed height.
Foldable.
25.6" projection from wall for comfortable side transfer.
Available with and without front support legs.



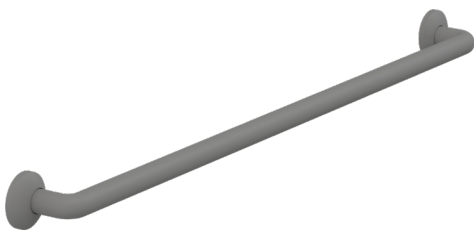
Product no. R1651000

VALUE backrest, fixed height.
For VALUE foldable shower seat.

REQUEST A QUOTE

Overview

Shower grab bars



Product no. RT042000

PLUS grab bar 42", warm slip resistant surface, diameter 1.3",
for fixed mounting.
Projection from wall 1.5".
In vertical installation can be combined with shower head
mount RT600.
Available in various lengths 18"-42".

REQUEST A QUOTE

Overview

Accessories



Product no. RT600112

PLUS shower head holder for mounting on vertical PLUS grab bar.
Recommended for use with grab bars RT018000, RT024000,
RT036000, RT042000.
RT613 shower head, with 3 types of jet.



Product no. RT190112

Soap holder for grab bars.

Product no. RT765

Universal wire basket, 12.8" x 4.6" x 5.3".
For horizontal wall track and shelf module.

REQUEST A QUOTE

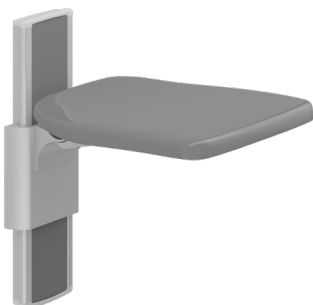
Overview

Foldable seats



Product no. R5510000

PLUS foldable seat.
Fixed height.
Foldable seats are ideal, where an additional seat is needed.
Not suitable for use in the shower area.



Product no. R5520112112

PLUS foldable seat.
Manually height adjustable by 9.4" without use of any tools.
Foldable seats are ideal, where an additional seat is needed.
Not suitable for use in the shower area.

REQUEST A QUOTE

PRESSALIT®

Pressalit A/S

Pressalitvej 1
8680 Ry
Denmark
T: +45 8788 8788
pressalit@pressalit.com

Pressalit Inc.

30 Westgate Parkway Ste 116
Asheville, NC 28806
USA
T: +1 202 271 0166
us@pressalit.com

Pressalit.com

PRESSALIT SUPPORTS UNITED NATIONS GLOBAL GOALS



PREMIUM BATHROOM SOLUTIONS SINCE 1954

Pressalit A/S is a Danish privately owned company with production facilities in Ry, Denmark. Since 1954, we have been designing and producing toilet seats of the highest quality. And since 1975, Pressalit has also been developing accessible bathrooms and height adjustable kitchen solutions for people with reduced mobility. This has made us one of the world's leading manufacturers of premium bathroom solutions. High quality, flawless design and reliable functionality are the core features of our wide range of products.

